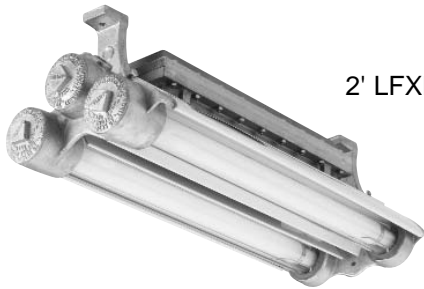


LFXB SERIES

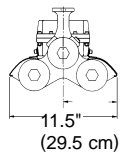
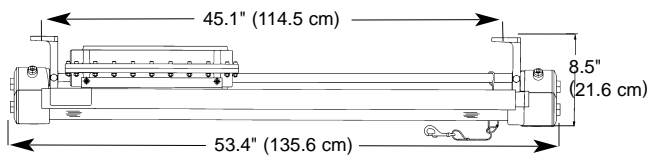
EXPLOSION-PROOF FLUORESCENT



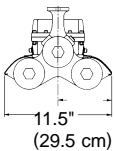
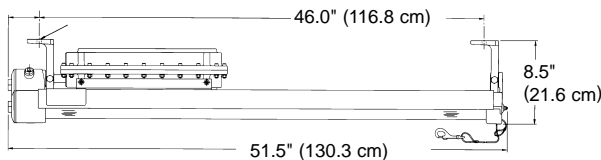
4' LFXB



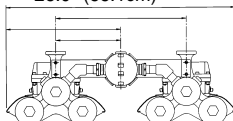
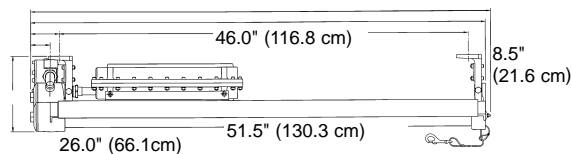
2' LFXB



4-Lamp Biax



2-Lamp



4-Lamp

DESCRIPTION: The *LFXB Series* “explosion-proof” fluorescent fixtures are designed for use in hazardous atmospheres classified as Class I, Division 1 and are outdoor, marine listed. Typical applications for these two- and four-lamp fixtures include chemical plants, drilling rigs, refineries, and paint spray booths.

SPECIFICATIONS

Factory-Sealed Fixture: No external sealing necessary. Fixture comes pre-lamped for fast installation.

Housing: Marine-grade, low-copper content aluminum housing provides excellent corrosion resistance and conforms to non-sparking standards.

Reflective Hood: Heavy gauge extruded aluminum reflector maximizes downlight and dent resistance.

Glass Tubes: Tempered borosilicate glass tubes provide lamps maximum protection from heat and impact.

Cast End Caps: Threaded end caps feature O-ring gaskets to maintain seal integrity.

Mounting Brackets: Mounting brackets permit fixture to be rotated about horizontal axis for aiming.

Ballast: 120V, 60Hz, electronic, thermally protected (Class P) cold-weather rated ballast standard. Alternative types available.

Exterior Materials: All exterior materials conform to non-sparking standards.

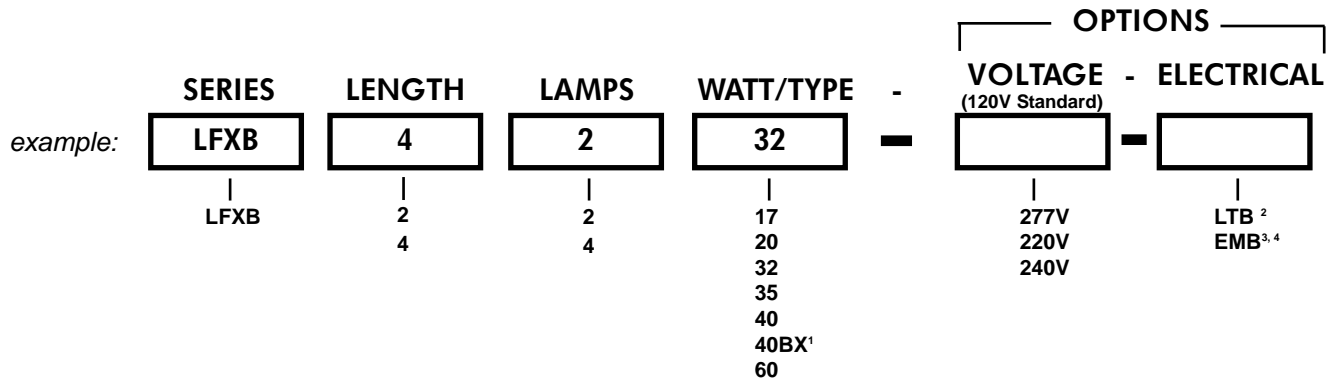
Ballast Protection: Neoprene O-ring gasket protects ballast and wiring from moisture and weathering.

Biax Model: Offers more than double the light output of standard 2-lamp, 40 watt fixture. Single ballast box speeds maintenance. Lamp retainer and support clips secure lamps for maximum shock and vibration protection.

PHOENIX®

ORDERING INFORMATION

***PLEASE NOTE: NOT ALL COMBINATIONS LISTED BELOW ARE AVAILABLE. CONTACT FACTORY WITH ANY QUESTIONS



WATT/TYPE (Base / fixture length)

(lamps included)

- 17 = F17 T-8 (Med Bi-pin, 2')
- 20 = F20 T-12 (Med Bi-pin, 2')
- 32 = F32 T-8 (Med Bi-pin, 4')
- 35 = F24 T-12HO (RDC, 2')
- 40 = F40 T-12 (Med Bi-pin, 4')
- 40BX = F40 BX (2G11; 2', 4')
- 60 = F48T-12HO (RDC, 4')

VOLTAGE

(120 volt is standard)

- 277V = 277 Volt
- 220V = 220 Volt
- 240V = 240 Volt (per 2 lamps)

ELECTRICAL

(electronic ballast is standard)

- LTB² = Low temperature ballast (per 2 lamps)
- EMB^{3,4} = Emergency Lighting w/ Battery Pack

¹ available in 4-lamp version only

² not available w/ Biax

³ available in 2-lamp version only

⁴ not cUL

COMPLIANCES

UL 844 Listed Hazardous Location
Class I, Division 1 / Groups C & D
Class II, Divisions 1 & 2 / Groups E,F,G
Suitable for Locations Having Deposits of
Readily Combustible Paint Residues



Simultaneous Presence - Class 1 & 2

UL 1598A Listed Marine Electric Fixture Outside Type (Saltwater)

cUL Listed: Indoor/Outdoor 4X (except emergency ballasted units)

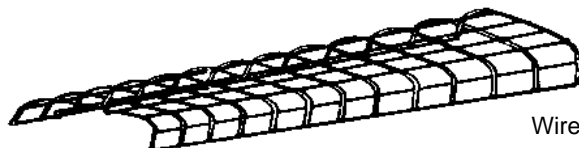
UL 944 (Emergency ballasted units)

TEMPERATURE RATINGS

Maximum operating temperature in degrees Celcius at maximum ambient 40 degrees Celcius

LISTING	2-LAMP LFXB	4-LAMP BIAX LFXB	4-LAMP LFXB
CLASS I, DIV 1 GROUPS C,D	85 (T6)	85 (T6)	85 (T6)
CLASS II, DIV 1, 2 GROUPS E,F,G	165 (T3B)	165 (T3B)	165 (T3B)
SIMULTANEOUS PRESENCE C1, C2	165 (T3B)	165 (T3B)	165 (T3B)

ACCESSORIES



Wire Lens Guard (per 2 lamps)

N5499750B