

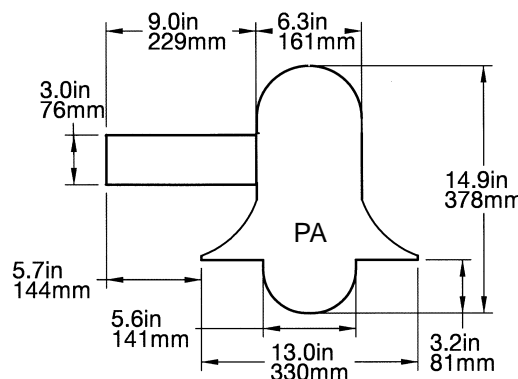
ODYSSEY - Pole Mount



Dome Top



Cone Top



General: The decorative Odyssey series provides excellent illumination in a low mount fixture.

Construction: Cast marine grade low copper content aluminum top, housing, shade, and mounting gear. Stainless steel external hardware to protect against corrosion.

Lens: Opal glass globe is standard. Clear glass available.

Lamps: HID and fluorescent lamps included. Accepts up to 100W MH and 70W HPS lamps, 26-42W compact fluorescent lamps and 150W (max.) incandescent lamps.

Ballast: Integral ballast for easy access and maintenance. 50W HID units standard with dual volt (120/277V) 60HZ ballast; 70W-100W units standard with quad volt (120/208/240/277V) 60HZ ballast; compact fluorescent units standard with universal 120-277V 50/60HZ electronic ballast.

Tops: Two top styles available: cone and dome.

Mounting: Straight arm pole mount only. See order information for quantity and configuration details.

Pole: Sold separately. See Phoenix "Pole Specification Guide".

Finish: Textured polyester powder coat finish. Shade underside is standard with white finish. Black standard on housing exterior. Bronze, gray, white, silver, and verde green options available. For custom colors, please contact factory.

Gaskets: EPDM gaskets standard.

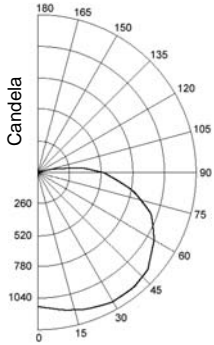
E.P.A. and Weight: EPA: PA=0.54ft²; weight: PA=15lbs.

Listings: UL Listed for Wet Locations. Indoor/Outdoor listed for use in Canada.

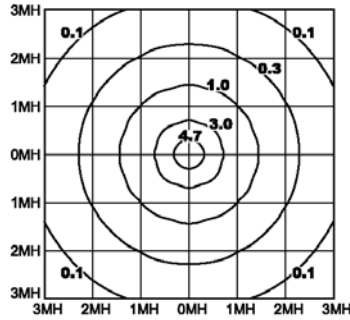
WALL MOUNT FIXTURE AVAILABLE



PHOTOMETRICS



ODPA100MH*
100W Medium Base MH
NEMA Type: 7x7
Lumens - 9000
* Insert Top Style



ODPA100MH*
100W Medium Base MH
Lumens - 9000
* Insert Top Style
Mounting Height = 15'

For mounting heights (MH) other than 15' use:

$$\left(\frac{15}{\text{Actual Height}}\right)^2 \times \text{FC chart value}$$

For lamp watts other than shown in chart use:

$$\left(\frac{\text{Actual Lumens}}{9000}\right) \times \text{FC chart value}$$

FC = Footcandle

ORDERING INFORMATION

Example	SERIES	MOUNT	WATT/ TYPE	TOP STYLE	OPTIONS		
					LENS <small>(opal standard)</small>	VOLTAGE <small>(277V standard)</small>	FINISH <small>(black standard)</small>
	OD	PA	100MH	C	CL	347V	BRZ
	OD	PA	50MH 70MH 100MH 50HPS 70HPS INC 26CFL 32CFL 42CFL	C D	CL	220/240-50H 347V	BRZ WHT VGN GRY SIL CC

Voltage

HID: 50W = 120/277V; 60 HZ standard
70W+ = 120/208/240/277V standard
CFL: 120/277V; 50/60 HZ standard

220/240-50H = 220/240V, 50HZ
(HID units only)

347V = 347 Volt
(70W HID or higher units only)

Lamp Wattage/Type (Lamp Included)

50MH = 50W Metal Halide (ED17)
70MH = 70W Metal Halide (ED17)
100MH = 100W Metal Halide (ED17)
50HPS = 50W High Pressure Sodium (ED17)
70HPS = 70W High Pressure Sodium (ED17)
INC = Incandescent (150W max.)
26CFL = 26W Compact Fluorescent
32CFL = 32W Compact Fluorescent
42CFL = 42W Compact Fluorescent

Mounting

PA = Straight Arm Pole Mount

Top Style

C = Cone Top
D = Dome Top

Lens (Opal Glass Standard)

CL = Clear Glass Globe

Finish (Black Standard)

BRZ = Bronze
WHT = White
VGN = Verde Green
GRY = Gray
SIL = Silver
CC = Custom Colors
(contact factory)

N5610349B

PHOENIX
Intrigue
SERIES™