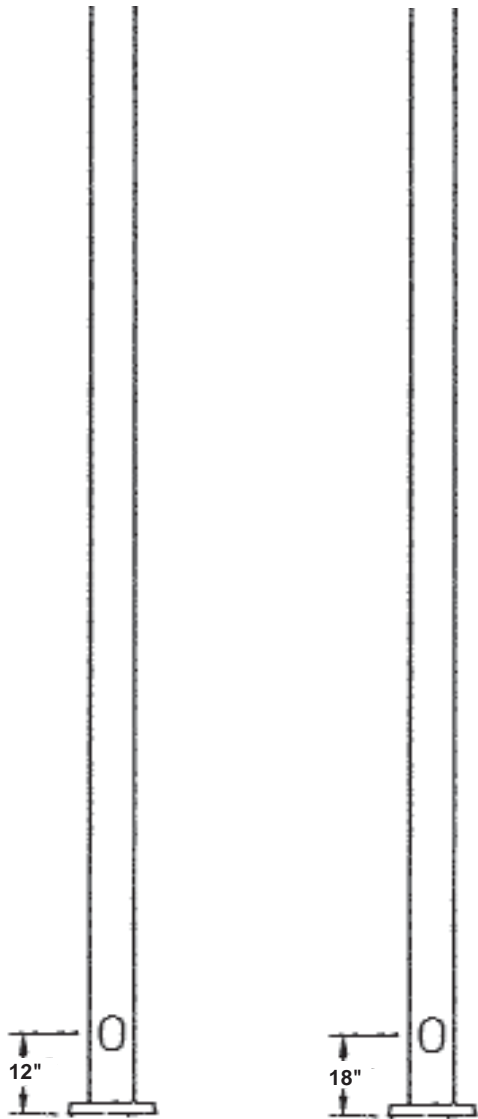


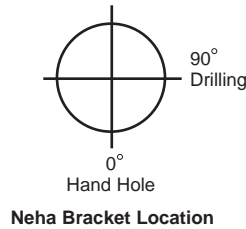
PA5 SERIES

Straight Poles, Open Top, for Indirect Series



4.5" diameter
(All models except Neha)

6" diameter
(Neha only)



General: Aluminum pole with sleek, unobtrusive base design for use in harsh winter and coastal environments.

Pole Construction: Pole shaft made of extruded aluminum to prevent rust and corrosion. Ground lug standard.

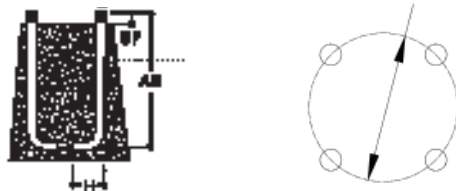
Base and Mounting: Cast aluminum base welded to pole and heat-treated after welding for maximum strength and safety.

Finish: Textured polyester powder coat finish. Available in black, bronze, gray, white, silver, and verde green. For custom colors please contact factory.

Hardware: All hardware is stainless steel, except for anchorage hardware.

Anchor Bolts: Included in price; ordered separately. Anchor bolt set includes 3/4" -10NC galvanized steel anchor bolts, hex nuts, lock washers, and flat washers. Available for early shipment. See chart on page 2 for ordering information. Aluminum anchor bolt covers are provided with each pole.

Anchor Bolts



For bolt circle diameter and bolt dimensions see chart on page 2



EPA/WIND SPEED DATA

Consult factory for EPA/wind speed capability or mounting height requirements. Consult factory when mounting banner arms on poles. Banner arms not recommended for 4.5" diameter poles.

ORDERING INFORMATION

Complete installation requires Anchor Bolt Kit and Template (see below)

SERIES	SHAFT STYLE	HEIGHT	WALL THICKNESS	DIAMETER	MOUNTING TYPE	OPTIONS (Factory installed)	FINISH
Example: PA5	S	10	M	4.5	IND	E	BLK
	S	08 10 12 15 18 20	M	4.5 *6	IND *INDH	E V	BLK BRZ WHT VGN GRY SIL CC

Shaft Style

S = Straight Aluminum Pole

Wall Thickness

M = 0.188"

Options (factory installed)

E = GFI Convenience Outlet
V = Vibration Damper

Height

08 = 8' Pole
10 = 10' Pole
12 = 12' Pole
15 = 15' Pole
16 = 16' Pole
18 = 18' Pole
20 = 20' Pole

Diameter and Mounting

4.5IND = 4.5" (bria, terra, emi, mira or nico)
open top, no tenon; 4.5" diameter only

*6INDH = 6.0" (neha only)
open top, no tenon and drilled for
neha fixture arm mounting; 6.0"
diameter only

Paint Finish

BLK = Black
BRZ = Bronze
WHT = White
VGN = Verde Green
GRY = Gray
SIL = Silver
CC = Custom Color (contact factory)

Anchor Bolt Kits (Required for complete installation)

P/N	# of Bolts Included	Bolt Length (AB)
6135015	4	17"
6135016	4	30"

Template Kits (Required for complete installation)

P/N	Shaft Diameter	Circle Diameter
5610465	4.5"	7-3/4"
5610466	6"	8-3/4"

